

## OVERVIEW

HI TECH ARAI PVT LTD is manufacturer of high quality **Rubber sealing and Aluminium die casting** components ,its machining & sub assembly for the leading Global Automotive OEMs.

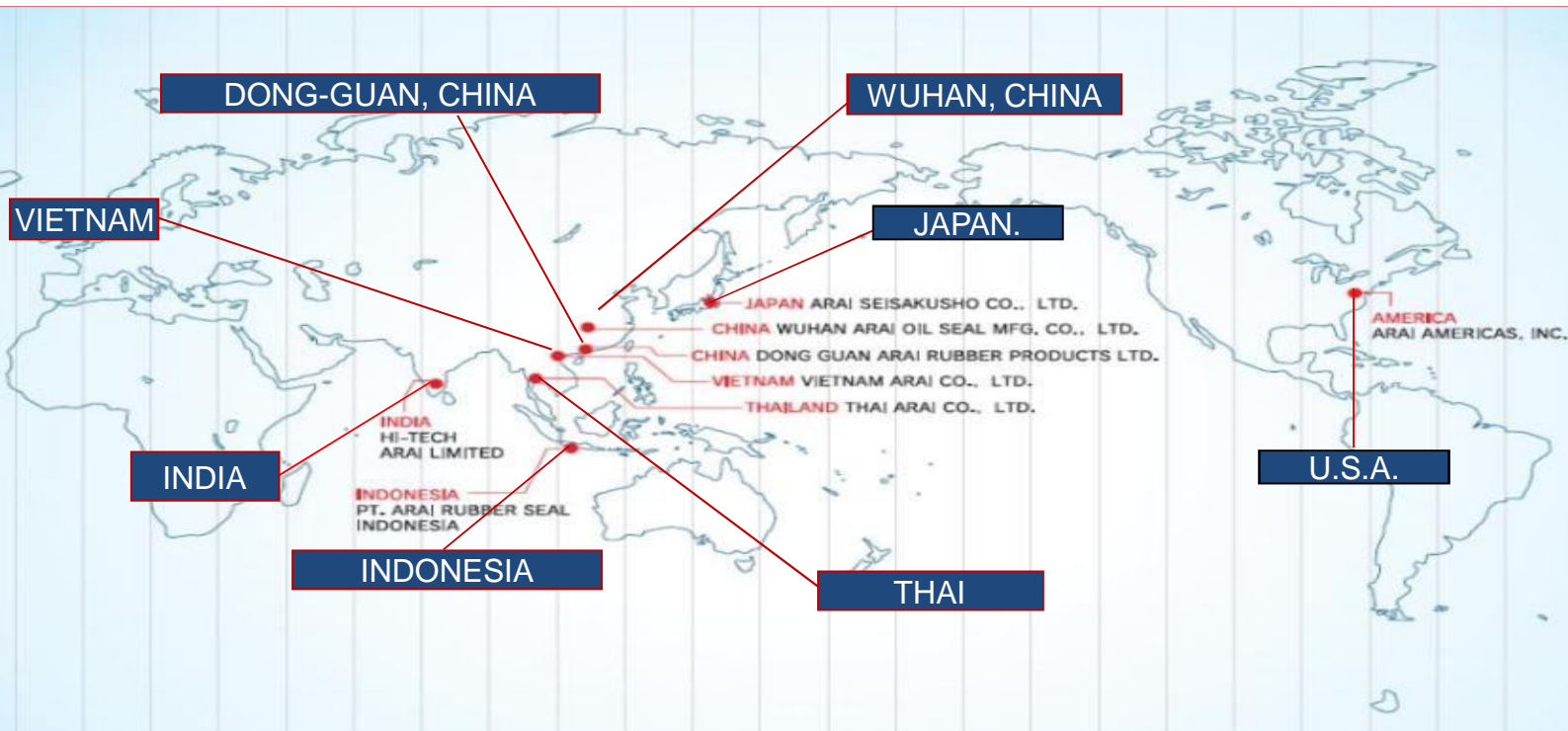
The Manufacturing facilities incorporate modern technologies and highly efficient production processes, and are certified to the highest quality and safety standards specified by the Automotive Industry.

Auto Cast Division is having state of the Art manufacturing facility along with strong in-house R&D Capabilities under one roof .

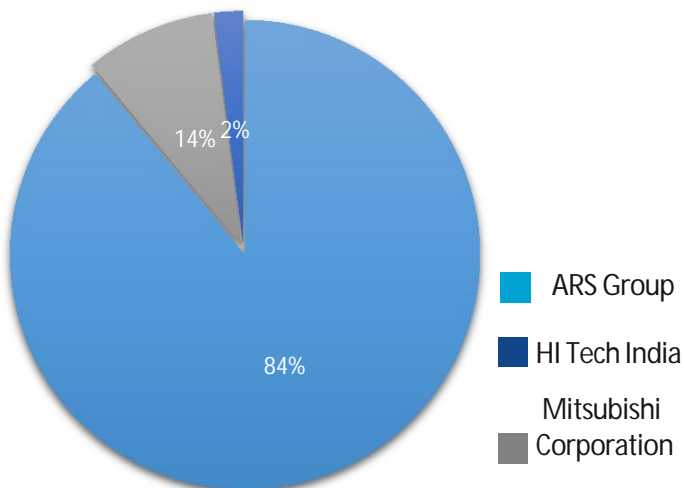
## KEY FACTS

Incorporated in 1985	Global Supplier of Automotive Components
Strong in-house R&D Capabilities	Plants are easy Accessible by Road, Port & Air
1500+ Employees	2 Divisions for Aluminum Casting
HTA Turnover (FY 18-19)- 650 Cr.	All Automotive Certifications

HI- TECH ARAI is SUBSIDIARY OF ARS GROUP



## SHAREHOLDING PATTERN



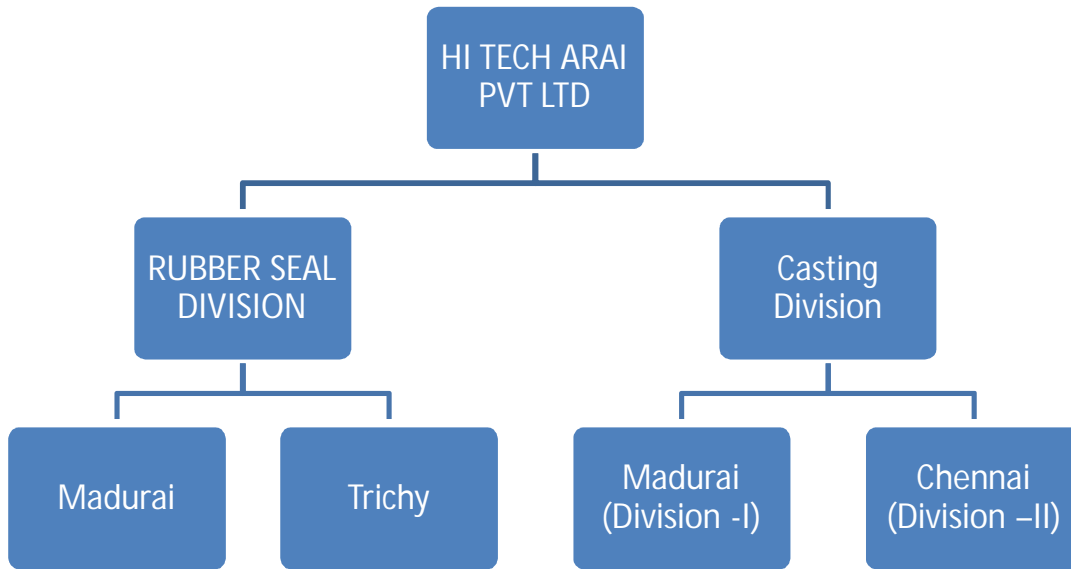
## STRATEGIES

<b>World Class Quality</b>	ISO 9001, IATF 16949, ISO 14001, ISO 45001
<b>Preferred Supplier</b>	Customer Focused Enterprise, Efficient and Program Management. 20+ Yrs QCD performance with Major OEM.
<b>Globalization</b>	Global foot prints , Supplying the parts to all the globe .
<b>Integrated Service -ART to PART</b>	Design, Development & Engineering Services, R&D, Testing & Validation, Tooling & Prototyping, Casting (Aluminum), Machining & Assembly, Packaging & Logistics
<b>People</b>	Regular Training, Skill Building & Empowerment and Leadership

## HI TECH ARAI , INDIA STRUCTURE

### KEY MANAGEMENT

**Mr. BT Bangera**  
Managing Director

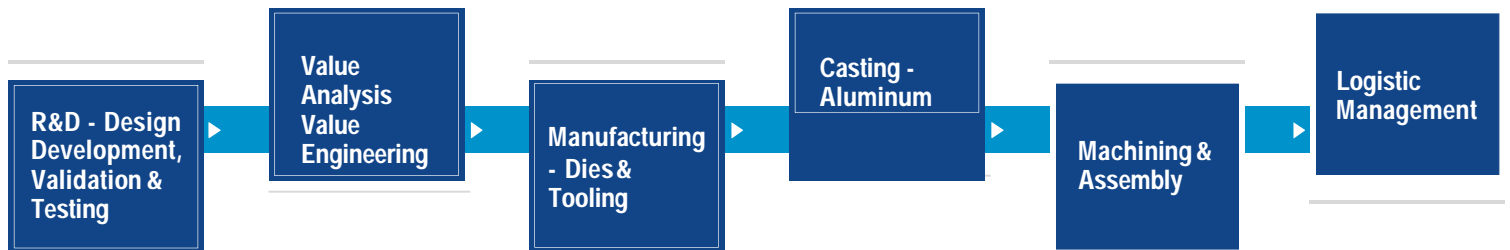


### PRODUCTS



## HI TECH ARAI AUTO CAST DIVISION

### CONCEPT TO COMPLETION



### PLANTS INDIA



## KEY PRODUCTS

Name	Capabilities	Key products	Plant Locations
<b>ALUMINIUM CASTING</b>	<ul style="list-style-type: none"> <li>High Pressure Die Casting Machines , including TGDC , GDC , Automatic core Shooter, carousel</li> <li>Machines are TOYO make and recently establish in the plants .</li> <li>Max Tonnage - 650 ton</li> </ul>	<ul style="list-style-type: none"> <li>Compressor Housing</li> <li>Air Inlet manifolds</li> <li>Oil &amp; Water Pump Housing &amp; Assemblies</li> <li>Clutch Assemblies</li> <li>Fuel System Components</li> <li>Differential Housings &amp; Covers</li> <li>Rocker Arm</li> <li>Fork Shift</li> <li>CAC Pipes</li> <li>P S Pump</li> </ul>	<ul style="list-style-type: none"> <li>Chennai</li> </ul> <p>Casting capacity – 300 Ton Per Month</p>
	<p>125 Ton Toyo Machine – 3 250 Ton Toyo Machine – 3 350 Ton Toyo Machine - 3 650 Ton Toyo Machine – 1</p>	<ul style="list-style-type: none"> <li>Brake parts</li> <li>Fork Shift</li> <li>Turbine &amp; Center Housings</li> <li>Retainer Bearing Assembly</li> <li>Brake Discs &amp; Drums</li> <li>Wheel Hub &amp; Clutch</li> <li>Suspension parts</li> <li>Engineering products</li> </ul>	<p>Madurai</p> <p>Casting capacity – 3.7 Lac Shots Per Month</p>
<b>MACHINING AND ASSEMBLY</b>	<ul style="list-style-type: none"> <li>Over 70 No of CNC Machines of Turning, VMC &amp; HMC</li> </ul>		
<b>DIES AND MOULDS &amp; Design</b>	<ul style="list-style-type: none"> <li>Design Support in Dies &amp; Patterns Manufacturing.</li> </ul>	<p>3D Modelling of Parts , Metal Flow Analysis , 3 D Modelling of Machining fixtures</p>	
<b>Customer Segmentation</b>	<ul style="list-style-type: none"> <li>Company equally focuses on automotive &amp; non Automotive components business, especially for complex product development where we can contribute through VA/VE . Every Customer is equal and important for us .</li> </ul>		
<b>CASTING ENGINEERING</b>	<ul style="list-style-type: none"> <li>HTA has over licenses across various software's Like PRO E, IDEAS, Auto-cad, , MAGMA Soft,</li> <li>Inhouse designing, prototyping &amp; product optimization.</li> </ul>		

## CLIENTELE

